



MMS Data Model Upgrade Report

MMS Data Model v4.30 Oracle

6/02/2020

Contents

1	Description of the model MMS Data Model v4.30 Oracle	4
2	Notes	4
2.1	Visibility	4
3	Package: SETTLEMENT_CONFIG	6
3.1	List of tables.....	6
3.2	Diagram: Entities: Settlement Config.....	7
3.3	Table: REALLOCATION	8

Disclaimer

This document is made available to you on the following basis:

- (a) Purpose - This document is provided by the Australian Energy Market Operator Limited (AEMO) to you for information purposes only. You are not permitted to commercialise it or any information contained in it.
- (b) No Reliance or warranty - This document may be subsequently amended. AEMO does not warrant or represent that the data or information in this document is accurate, reliable, complete or current or that it is suitable for particular purposes. You should verify and check the accuracy, completeness, reliability and suitability of this document for any use to which you intend to put it and seek independent expert advice before using it, or any information contained in it.
- (c) Limitation of liability - To the extent permitted by law, AEMO and its advisers, consultants and other contributors to this document (or their respective associated companies, businesses, partners, directors, officers or employees) shall not be liable for any errors, omissions, defects or misrepresentations in the information contained in this document, or for any loss or damage suffered by persons who use or rely on such information (including by reason of negligence, negligent misstatement or otherwise). If any law prohibits the exclusion of such liability, AEMO's liability is limited, at AEMO's option, to the re-supply of the information, provided that this limitation is permitted by law and is fair and reasonable.

© 2010 - All rights reserved.

1 Description of the model MMS Data Model v4.30 Oracle

Background

The MMS Data Model is the definition of the interface to participants of data published by AEMO from the NEM system. A database conforming to the MMS Data Model can contain a local copy of all current participant-specific data recorded in the main NEM production database. The target databases have been called such names as the Participant Database, the Participant InfoServer and the Replica Database.

The MMS Data Model includes database tables, indexes and primary keys. The model is currently exposed as a physical model, so is different in presentation for each RDBMS. However, the same logical model underlies all the physical models published by AEMO.

The MMS Data Model is the target model for products transferring data from AEMO to each participant. Current product supplied by AEMO for data transfer is Participant Data Replication (PDR), with some support for the superseded Parser.

Compatibility of the transfer products with the MMS Data Model is the responsibility of those products and their configuration. AEMO's intention is to supply the data transfer products pre-configured to deliver data consistent with the MMS Data Model, noting differences where they occur (e.g. for historical reasons).

Entity Diagrams

The entity diagrams show the key columns. Relationships have now been included in many cases.

Note:

The National Electricity Market registration classification of Yarwun Power Station Unit 1 (dispatchable unit ID: YARWUN_1) is market non-scheduled generating unit. However, it is a condition of the registration of this unit that the Registered Participant complies with some of the obligations of a Scheduled Generator. This unit is dispatched as a scheduled generating unit with respect to its dispatch offers, targets and generation outputs. Accordingly, information about YARWUN_1 is reported as scheduled generating unit information.

2 Notes

Each table description has a Note providing some information relevant to the table.

2.1 Visibility

Visibility refers to the nature of confidentiality of data in the table. Each table has one of the following entries, each described here.

Private: meaning the data is confidential to the Participant (e.g. BILLINGFEES).

Public: meaning all Participants have access to the data (e.g. DISPATCHPRICE).

Private, Public Next-Day: meaning the data is confidential until available for public release at beginning of next day (i.e. 4am) (e.g. BIDDAYOFFER).

Private & Public: meaning some items are private and some are public (e.g. MARKETNOTICES).

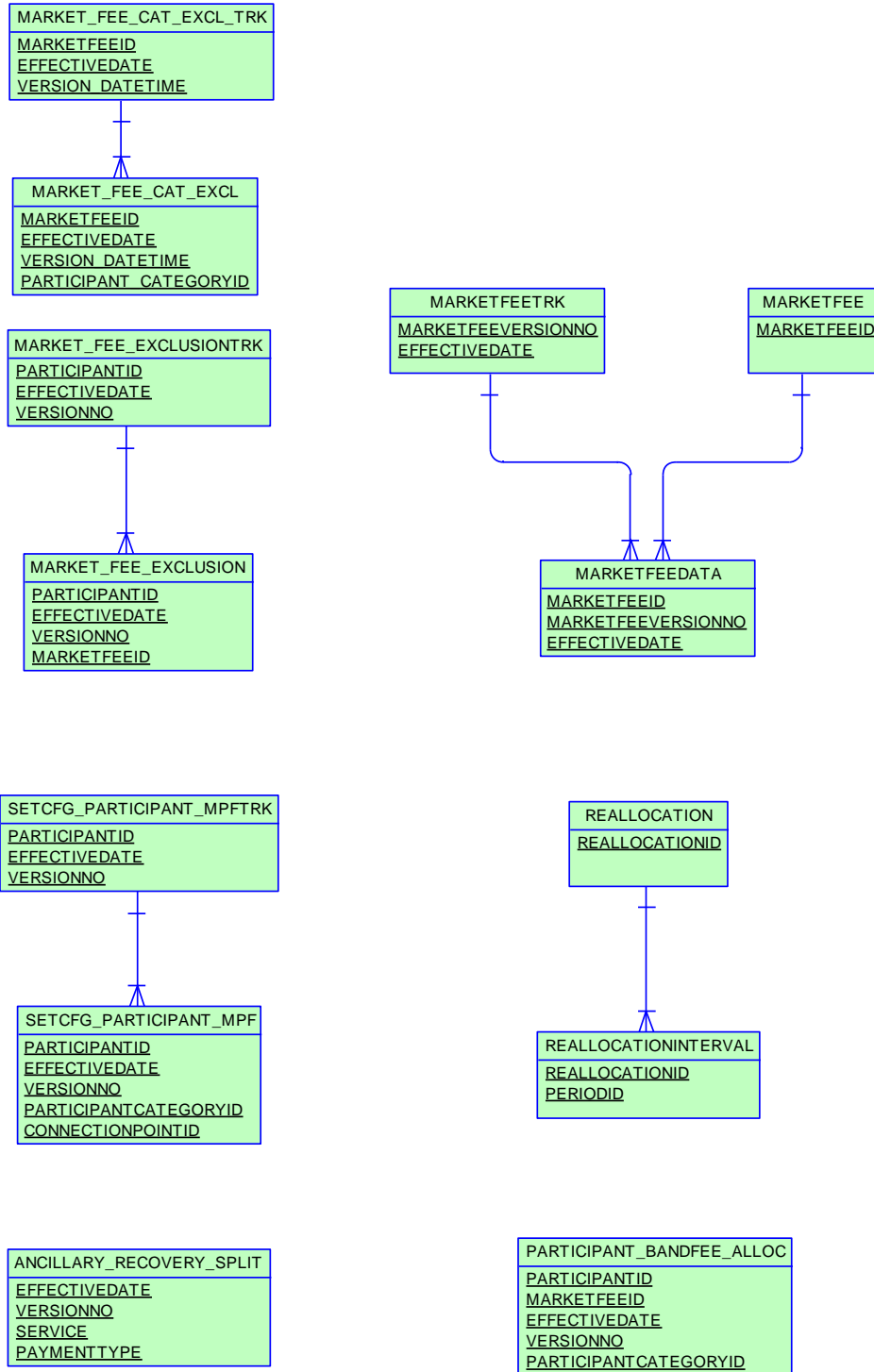
3 Package: SETTLEMENT_CONFIG

<i>Name</i>	SETTLEMENT_CONFIG
<i>Comment</i>	Configuration and input data for the Settlements Process

3.1 List of tables

Name	Comment
REALLOCATION	The REALLOCATION table shows the financial transactions agreed between two participants that are settled through the AEMO pool settlements process.

3.2 Diagram: Entities: Settlement Config



3.3 Table: REALLOCATION

<i>Name</i>	REALLOCATION
<i>Comment</i>	The REALLOCATION table shows the financial transactions agreed between two participants that are settled through the AEMO pool settlements process.

3.3.1 Description

Note

The column REALLOCATION_TYPE can be used in conjunction with CREDITPARTICIPANT or DEBITPARTICIPANT to determine who submitted a reallocation.

3.3.2 Notes

Name	Comment	Value
Visibility	Data in this table is:	Private

3.3.3 Primary Key Columns

Name
REALLOCATIONID

3.3.4 Index Columns

Name
LASTCHANGED

3.3.5 Content

Name	Data Type	Mandatory	Comment
REALLOCATIONID	VARCHAR2(20)	X	Reallocation identifier

CREDITPARTICIPANTID	VARCHAR2(10)		The participant to be credited for the reallocation
DEBITPARTICIPANTID	VARCHAR2(10)		The participant to be debited for the reallocation
REGIONID	VARCHAR2(10)		Region identifier, being the spot price reference node for this reallocation
AGREEMENTTYPE	VARCHAR2(10)		\$(Quantity) Mwh, SWAP, CAP or FLOOR
CREDITREFERENCE	VARCHAR2(40)		Optional reference detail for credit participant
DEBITREFERENCE	VARCHAR2(40)		Optional reference detail for debit participant
LASTCHANGED	DATE		Last date and time record changed
STARTDATE	DATE		First day of the Reallocation contract
ENDDATE	DATE		Last day of the Reallocation contract
CURRENT_STEPID	VARCHAR2(20)		Reallocation state. One of SUBMITTED, AUTHORISED, CANCELLED.
DAYTYPE	VARCHAR2(20)		The day type profile for which the reallocation applies over the start and end date range. Valid entries are BUSINESS, NON_BUSINESS or FLAT.
REALLOCATION_TYPE	VARCHAR2(1)		Denotes a Credit or Debit reallocation with a value of "C" or "D" respectively
CALENDARID	VARCHAR2(30)		Unique ID of the calendar for

)		which data is requested
INTERVALLENGTH	NUMBER(3,0)		The length of settlement intervals (in minutes) in the reallocation profile